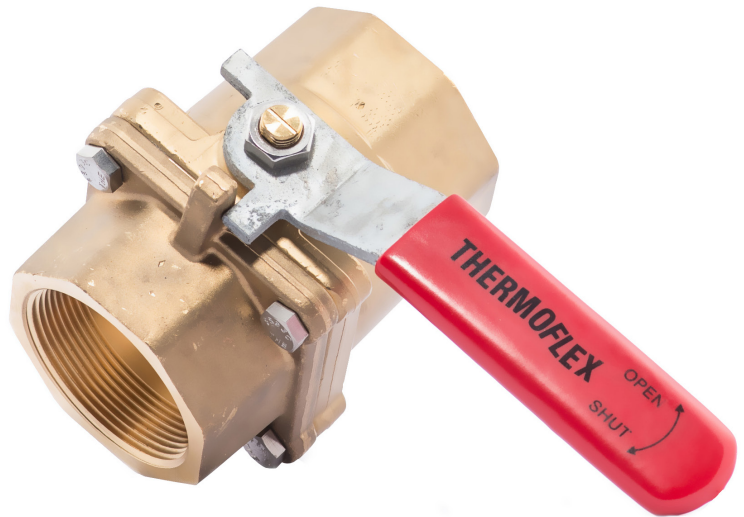


BALL VALVE: 2-PIECE THREADED Brass

FEATURES

- ◆ Standard port 400WOG ball valve
- ◆ Self-cleaning and self-adjusting compressed seal
- ◆ Double O-ring stem
- ◆ Body: forged brass precision machined
- ◆ Ball: brass precision machined
- ◆ Stem: brass/chrome plated precision machined
- ◆ O-rings: Buna-N (NBR)
- ◆ Seat: Buna-N (NBR)
- ◆ Prolonged life expectancy
- ◆ Working pressure: 400PSI
- ◆ Temperature range: -50°F to 250°F (-45.5°C to 121°C)
- ◆ Open/close position indicator



OPTION

- ◆ Padlocking device
- ◆ Sampling device

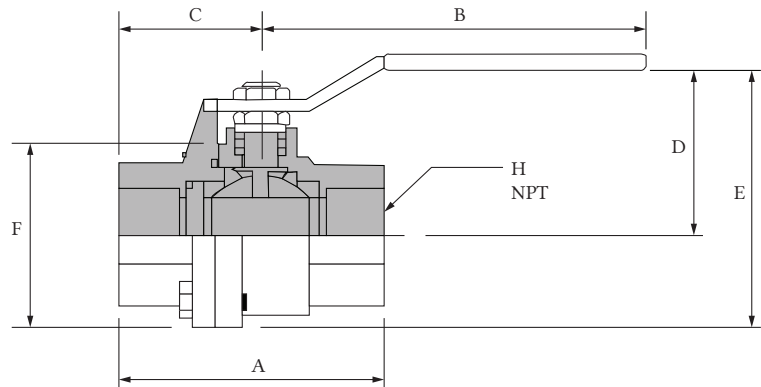
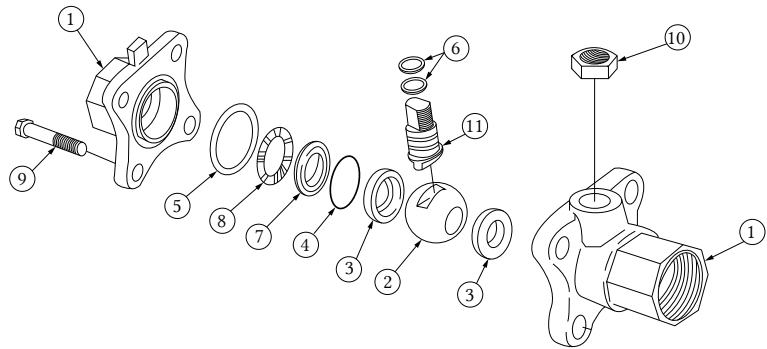
BALL VALVE: 2-PIECE THREADED

Brass

DIMENSIONS									
SIZE	PORT	A	B	C	D	E	F	H	WT
¼"	9.5	62.7	95.25	34.3	37.3	58.2	41.4	¼" NPT	1.0
½"	9.5	65.5	95.25	35.5	37.3	58.2	41.15	½" NPT	1.5
¾"	12.7	67.3	114.3	36.3	45.5	70.86	50.8	¾" NPT	2.5
1"	17.5	81.3	112.8	43.2	47.5	77	58.67	1" NPT	3.0
1 ½"	30.2	108.2	147.5	57.15	65	102.1	74.4	1 ½" NPT	4.5
2"	34.9	117.1	147.57	60.7	67.8	110	84.3	2" NPT	6.75

* All dimensions recorded in millimeters

MATERIALS LIST			
No	PART	MATERIAL	QTY
1	BODY	FORGED BRASS	2
2	BALL	BRASS PRECISION MACHINED	1
3	SEATS	Buna-N (NBR)	2
4	SEAT O-RING	Buna-N (NBR)	1
5	JOINT O-RING	Buna-N (NBR)	1
6	STEM O-RING	Buna-N (NBR)	2
7	DISC	BRASS PRECISION MACHINED	1
8	SPRING	304SS	1
9	CAP SCREW	304SS	4
10	JAM NUT	304SS	1
11	STEM	BRASS/CHROME PLATED PRECISION MACHINED	1
	HANDLE	GALVANIZED/304SS	1
	HANDLE SLEEVE	PLASTIC	1
	LOCKING DEVICE OPTION*	304SS	1
	SAMPLING DEVICE OPTION*	BRASS PRECISION MACHINED	1



THERMOFLEX

Thermoflex 2136 Rue Léger, LaSalle, Québec, H8N 2L8, Canada

1-888-352-3414 514-367-1444 514-367-3193

thermoflex@bellnet.ca thermoflex.ca

B-1

DISCLAIMER: While every effort has been made to ensure the accuracy of the data herein, the data cited are subject to change without notice or liability.

BALL VALVE: 2-PIECE THREADED X FLANGED (B16.24)

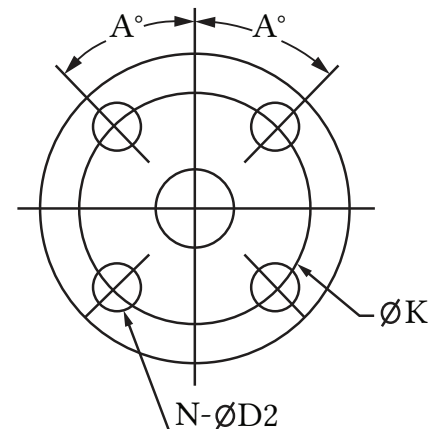
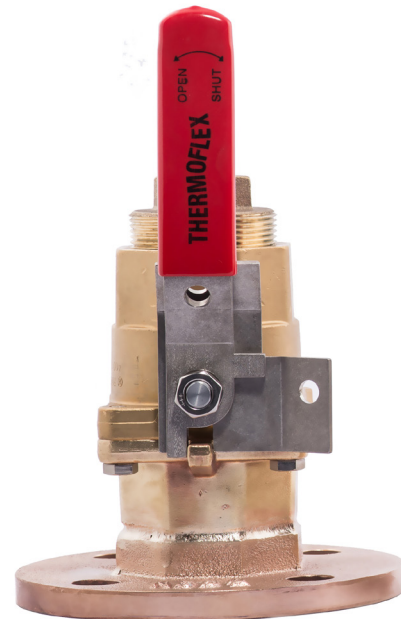
Brass

FEATURES

- ◆ Standard port 400WOG* ball valve
- ◆ Self-cleaning and self-adjusting compressed seal
- ◆ Double O-ring stem
- ◆ Body: forged brass precision machined
- ◆ Ball: brass precision machined
- ◆ Stem: brass/chrome plated precision machined
- ◆ Flange: brass/cast bronze Class 150 ANSI 16.24
- ◆ Square-head pipe plug: brass
- ◆ O-rings: Buna-N (NBR)
- ◆ Seat: Buna-N (NBR)
- ◆ Prolonged life expectancy
- ◆ Working pressure 150PSI*
- ◆ Temperature range: -50°F to 250°F (-45.5°C to 121°C)
- ◆ Open/close position indicator

OPTION

- ◆ Padlocking device
- ◆ Sampling device



Holes applied evenly,
symmetrically to the axis.

* Flanged assemblies: the pressure capacity of valve and flange assembly is restricted to the flange and not the valve.

BALL VALVE: 2-PIECE THREADED X FLANGED (B16.24)

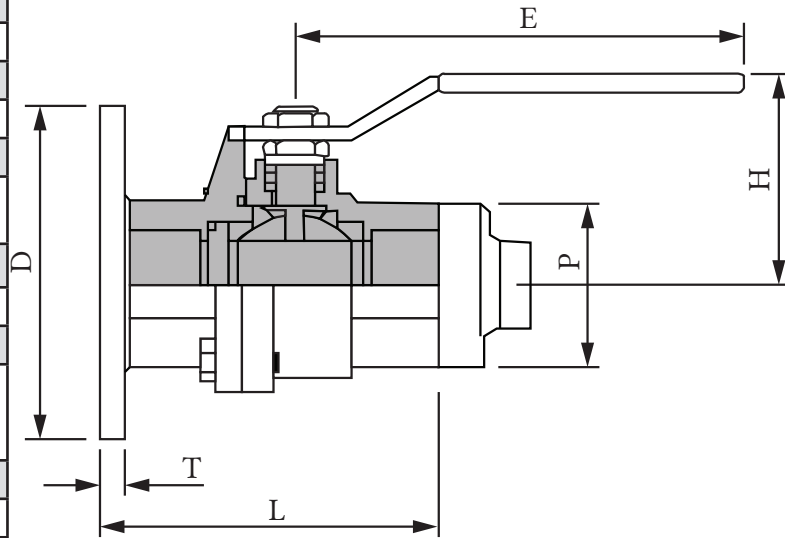
Brass

DIMENSIONS										
SIZE	L+/-5	D(d)	K	H+/-5	N	D2	P	E+/-5	T min	a
1/2"	95	89	60.4	40	4	16	NPT 1/2"	95	8	45
3/4"	95	99	70	45	4	16	NPT 3/4"	110	8.75	45
1"	110	108	79	50	4	16	NPT 1"	110	9.5	45
1 1/2"	130	127	99	65	4	16	NPT 1 1/2"	145	11	45
2"	145	152	120.6	70	4	19	NPT 2"	145	12.75	45

(d) -0/+10 "D"

* All dimensions recorded in millimeters

MATERIALS LIST			
No	PART	MATERIAL	QTY
1	BODY	FORGED BRASS	2
2	BALL	BRASS PRECISION MACHINED	1
3	SEATS	Buna-N (NBR)	2
4	SEAT O-RING	Buna-N (NBR)	1
5	JOINT O-RING	Buna-N (NBR)	1
6	STEM O-RING	Buna-N (NBR)	2
7	DISC	BRASS PRECISION MACHINED	1
8	SPRING	304SS	1
9	CAP SCREW	304SS	4
10	JAM NUT	304SS	1
11	STEM	BRASS/CHROME PLATED PRECISION MACHINED	1
	HANDLE	GALVANIZED/304SS	1
	HANDLE SLEEVE	PLASTIC	1
	LOCKING DEVICE OPTION*	304SS	1
	SAMPLING DEVICE OPTION*	BRASS PRECISION MACHINED	1



THERMOFLEX

Thermoflex 2136 Rue Léger, LaSalle, Québec, H8N 2L8, Canada

1-888-352-3414 514-367-1444 514-367-3193

thermoflex@bellnet.ca thermoflex.ca

BALL VALVE: 2-PIECE THREADED X FLANGED (B16.24) SAMPLER

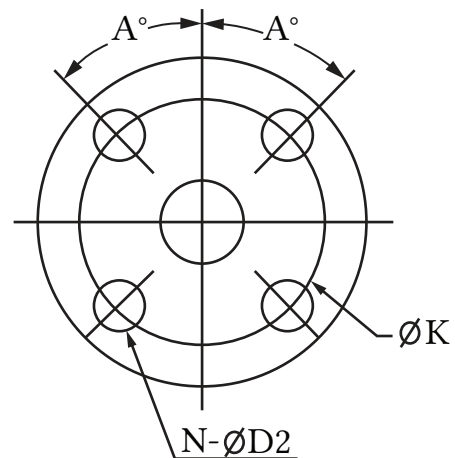
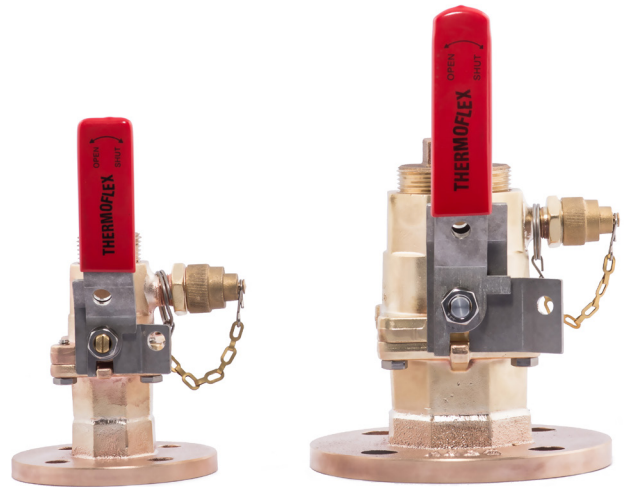
Brass

FEATURES

- ◆ Standard port 400WOG* ball valve
- ◆ Self-cleaning and self-adjusting compressed seal
- ◆ Double O-ring stem
- ◆ Body: forged brass precision machined
- ◆ Ball: brass precision machined
- ◆ Stem: brass/chrome plated precision machined
- ◆ Flange: brass/cast bronze Class 150 ANSI 16.24
- ◆ Square-head pipe plug: brass
- ◆ Sampler: 3/8" brass precision machined
- ◆ O-rings: Buna-N (NBR)
- ◆ Seat: Buna-N (NBR)
- ◆ Prolonged life expectancy
- ◆ Working pressure: 150PSI*
- ◆ Temperature range: -50°F to 250°F (-45.5°C to 121°C)
- ◆ Open/close position indicator

OPTION

- ◆ Padlocking device



Holes applied evenly,
symmetrically to the axis.

* Flanged assemblies: the pressure capacity of valve and flange assembly is restricted to the flange and not the valve.

BALL VALVE: 2-PIECE THREADED X FLANGED (B16.24) SAMPLER

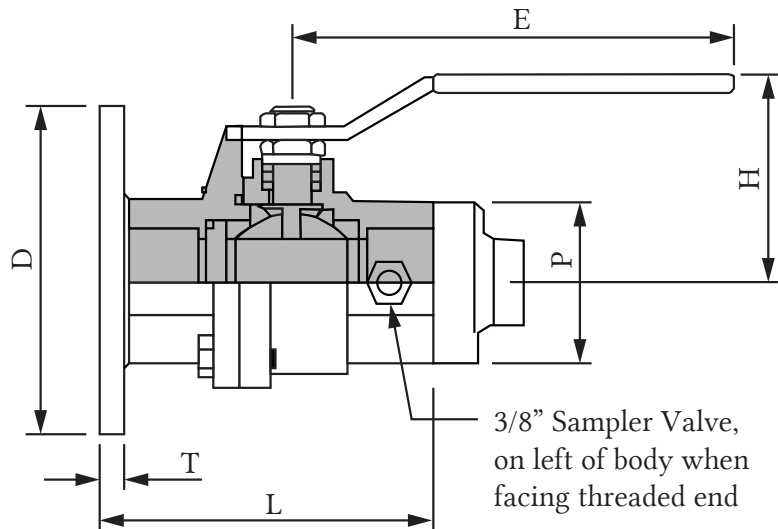
Brass

DIMENSIONS										
SIZE	L+/-5	D(d)	K	H+/-5	N	D2	P	E+/-5	T min	a
1"	110	108	79	50	4	16	NPT 1"	110	9.5	45
1 1/2"	130	127	99	65	4	16	NPT 1 1/2"	145	11	45
2"	145	152	120.6	70	4	19	NPT 2"	145	12.75	45

(d) -0/+10 "D"

* All dimensions recorded in millimeters

MATERIALS LIST			
No	PART	MATERIAL	QTY
1	BODY	FORGED BRASS	2
2	BALL	BRASS PRECISION MACHINED	1
3	SEATS	Buna-N (NBR)	2
4	SEAT O-RING	Buna-N (NBR)	1
5	JOINT O-RING	Buna-N (NBR)	1
6	STEM O-RING	Buna-N (NBR)	2
7	DISC	BRASS PRECISION MACHINED	1
8	SPRING	304SS	1
9	CAP SCREW	304SS	4
10	JAM NUT	304SS	1
11	STEM	BRASS/CHROME PLATED PRECISION MACHINED	1
	HANDLE	GALVANIZED/304SS	1
	HANDLE SLEEVE	PLASTIC	1
	LOCKING DEVICE OPTION*	304SS	1
	SAMPLING DEVICE OPTION*	BRASS PRECISION MACHINED	1



THERMOFLEX

Thermoflex 2136 Rue Léger, LaSalle, Québec, H8N 2L8, Canada

1-888-352-3414 514-367-1444 514-367-3193

thermoflex@bellnet.ca thermoflex.ca

BALL VALVE: 2-PIECE FLANGED X FLANGED (B16.24/B16.10)

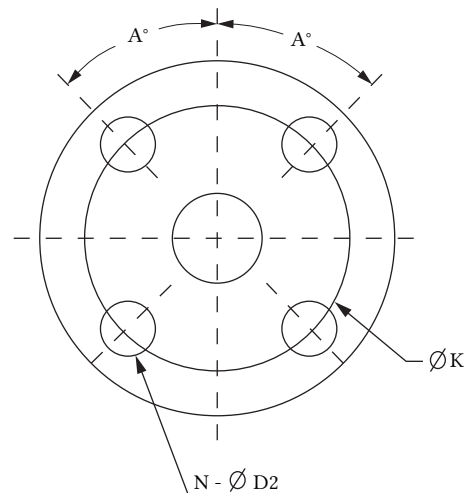
Brass

FEATURES

- ◆ Standard port 400WOG* ball valve
- ◆ Self-cleaning and self-adjusting compressed seal
- ◆ Double O-ring stem
- ◆ Body: forged brass precision machined
- ◆ Ball: brass precision machined
- ◆ Stem: brass/chrome plated precision machined
- ◆ Flange: brass/cast bronze Class 150 ANSI 16.24
- ◆ Square-head pipe plug: brass
- ◆ Face to face: ANSI B16.10
- ◆ O-Rings: Buna-N (NBR)
- ◆ Seat: Buna-N (NBR)
- ◆ Prolonged life expectancy
- ◆ Working pressure: 150PSI*
- ◆ Temperature Range: -50°F to 250°F (-45.5°C to 121°C)
- ◆ Open/close position indicator

OPTION

- ◆ Padlocking device
- ◆ Sampling device



Holes applied evenly,
symmetrically to the axis.

* Flanged assemblies: the pressure capacity of valve and flange assembly is restricted to the flange and not the valve.

BALL VALVE: 2-PIECE FLANGED X FLANGED (B16.24/B16.10)

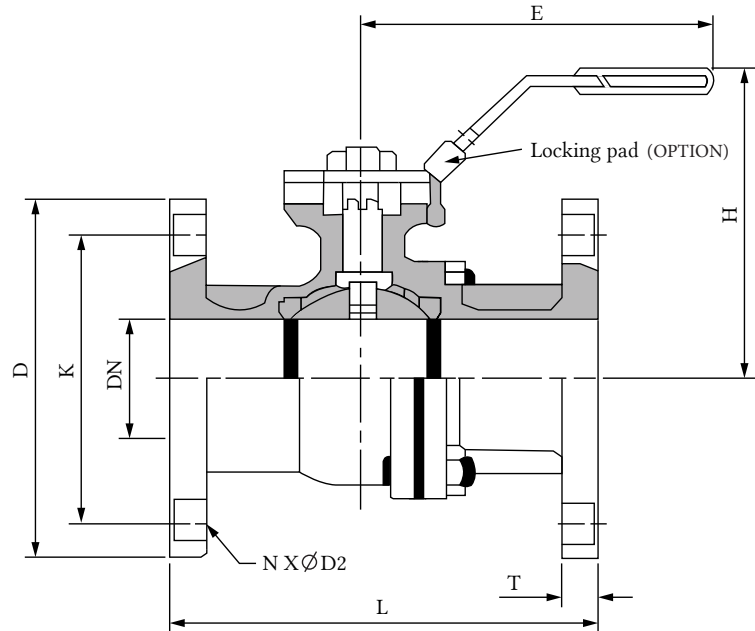
Brass

DIMENSIONS									
SIZE	L	D(d)	K	H+/-5	N	D2	E+/-5	T min	a
1/2"	108	89	60.4	75	4	16	90	8	45
3/4"	117	99	70	80	4	16	90	8.75	45
1"	127	108	79	80	4	16	90	9.5	45
1 1/2"	165	127	99	105	4	16	125	11	45
2"	178	152	120.6	105	4	19	125	12.75	45

(d) -0/+10 "D"

* All dimensions recorded in millimeters

MATERIALS LIST			
No	PART	MATERIAL	QTY
1	BODY	FORGED BRASS	2
2	BALL	BRASS PRECISION MACHINED	1
3	SEATS	Buna-N (NBR)	2
4	SEAT O-RING	Buna-N (NBR)	1
5	JOINT O-RING	Buna-N (NBR)	1
6	STEM O-RING	Buna-N (NBR)	2
7	DISC	BRASS PRECISION MACHINED	1
8	SPRING	304SS	1
9	CAP SCREW	304SS	4
10	JAM NUT	304SS	1
11	STEM	BRASS/CHROME PLATED PRECISION MACHINED	1
	HANDLE	GALVANIZED/304SS	1
	HANDLE SLEEVE	PLASTIC	1
	LOCKING DEVICE OPTION*	304SS	1
	SAMPLING DEVICE OPTION*	BRASS PRECISION MACHINED	1



THERMOFLEX

Thermoflex 2136 Rue Léger, LaSalle, Québec, H8N 2L8, Canada

1-888-352-3414 514-367-1444 514-367-3193

thermoflex@bellnet.ca thermoflex.ca

BALL VALVE: 3-PIECE THREADED Brass

FEATURES

- ◆ Standard port 600WOG ball valve
- ◆ Saturated steam: 150PSI
- ◆ Blow-out-proof stem
- ◆ Body: bronze
- ◆ Ball: brass with hard chrome plate
- ◆ Stem: bronze
- ◆ O-Rings: fluorocarbon rubber
- ◆ Seats: teflon (PTFE)
- ◆ Prolonged life expectancy
- ◆ Working pressure: 600PSI
- ◆ Temperature range: -50°F to 250°F
(-45.5°C to 121°C)
- ◆ Open/close position indicator



OPTION

- ◆ Padlocking device

BALL VALVE: 3-PIECE THREADED

Brass

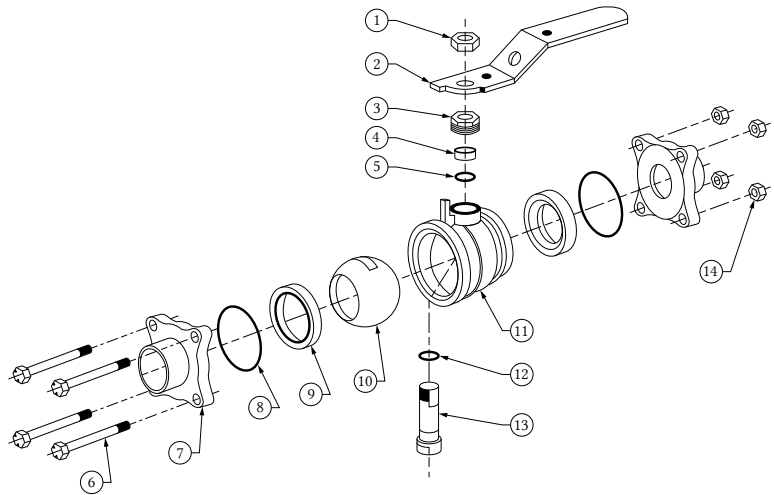
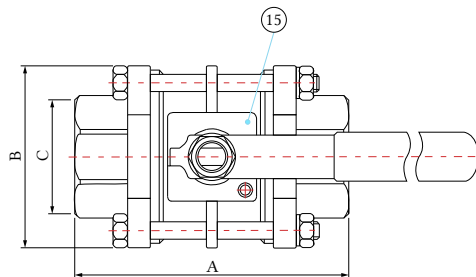
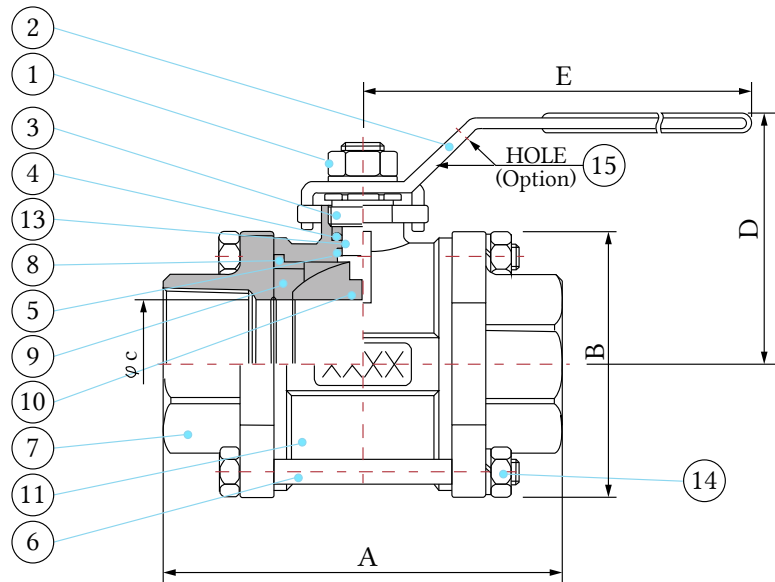
DIMENSIONS

SIZE	A	B	C	D	E	WT
3"	175	127	64	104	203	19

* All dimensions recorded in millimeters

MATERIALS LIST

No	PART	MATERIAL	QTY
1	HANDLE NUT	304SS	1
2	HANDLE	GALVANIZED/304SS	1
3	PACKING GLAND	BRASS PRECISION MACHINED	1
4	PACKING	PTFE	1
5	GROUNDING WASHER	BRASS PRECISION MACHINED	1
6	BODY BOLTS	304SS	4
7	CAP	BRONZE	2
8	O-RINGS	FLUOROCARBON RUBBER	2
9	SEAT	TEFLON (PTFE)	2
10	BALL	BRASS + HARD CHROME PLATE	1
11	BODY	BRONZE	1
12	THRUST WASHER	RTFE (+15% GF)	1
13	STEM	SILICON BRONZE PRECISION MACHINED	1
14	BODY NUT	304SS	4
15	LOCKING DEVICE OPTION*	304SS	1



THERMOFLEX

Thermoflex 2136 Rue Léger, LaSalle, Québec, H8N 2L8, Canada

1-888-352-3414 514-367-1444 514-367-3193

thermoflex@bellnet.ca thermoflex.ca

BALL VALVE: 3-PIECE THREADED X FLANGED (B16.24)

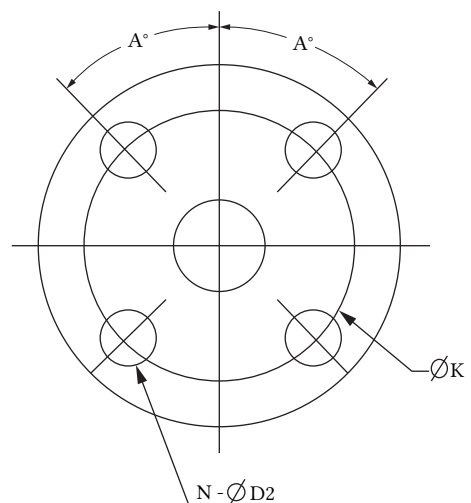
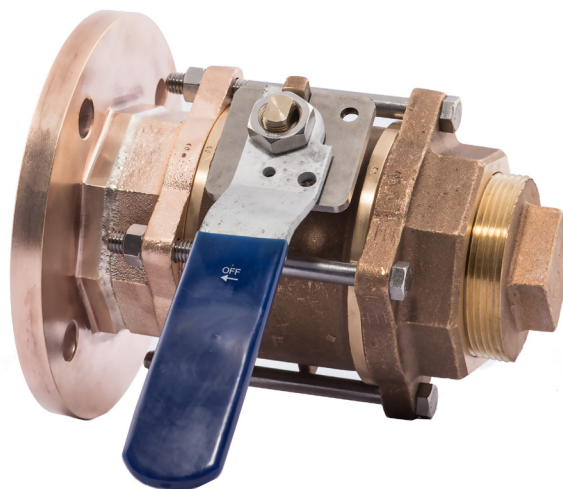
Brass

FEATURES

- ◆ Standard port 600WOG* ball valve
- ◆ Saturated steam: 150PSI*
- ◆ Blow-out-proof stem
- ◆ Body: bronze
- ◆ Ball: brass with hard chrome plate
- ◆ Stem: bronze
- ◆ O-Rings: fluorocarbon rubber
- ◆ Seats: teflon (PTFE)
- ◆ Flange: brass/cast bronze Class 150 ANSI 16.24
- ◆ Prolonged life expectancy
- ◆ Working pressure: 600PSI*
- ◆ Temperature range: -50°F to 250°F (-45.5°C to 121°C)
- ◆ Open/close position indicator

OPTION

- ◆ Padlocking device



Holes applied evenly,
symmetrically to the axis.

* Flanged assemblies: the pressure capacity of valve and flange assembly is restricted to the flange and not the valve.

BALL VALVE: 3-PIECE THREADED X FLANGED (B16.24)

Brass

DIMENSIONS

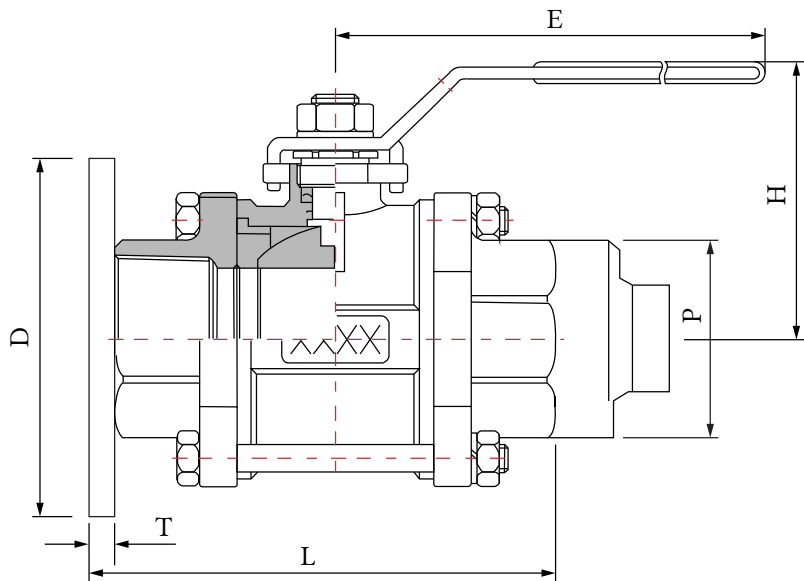
SIZE	L+/-5	D(d)	K	H+/-5	N	D2	P	E+/-5	T min	a
3"	200	191	152.5	105	4	19	NPT 3"	200	16	90

(d) -0/+10 "D"

* All dimensions recorded in millimeters

MATERIALS LIST

No	PART	MATERIAL	QTY
1	HANDLE NUT	304SS	1
2	HANDLE	GALVANIZED/304SS	1
3	PACKING GLAND	BRASS PRECISION MACHINED	1
4	PACKING	PTFE	1
5	GROUNDING WASHER	BRASS PRECISION MACHINED	1
6	BODY BOLTS	304SS	4
7	CAP	BRONZE	2
8	O-RINGS	FLUOROCARBON RUBBER	2
9	SEAT	TEFLON (PTFE)	2
10	BALL	BRASS + HARD CHROME PLATE	1
11	BODY	BRONZE	1
12	THRUST WASHER	RTFE (+15% GF)	1
13	STEM	SILICON BRONZE PRECISION MACHINED	1
14	BODY NUT	304SS	4
15	LOCKING DEVICE OPTION*	304SS	1



THERMOFLEX

Thermoflex 2136 Rue Léger, LaSalle, Québec, H8N 2L8, Canada

☎ 1-888-352-3414 514-367-1444 🖨 514-367-3193

✉ thermoflex@bellnet.ca 🌐 thermoflex.ca

B-6

DISCLAIMER: While every effort has been made to ensure the accuracy of the data herein, the data cited are subject to change without notice or liability.

BALL VALVE: 3-PIECE FLANGED X FLANGED (B16.24/B16.10)

Brass

FEATURES

- ◆ Standard port 600WOG* ball valve
- ◆ Saturated steam: 150PSI*
- ◆ Blow-out-proof stem
- ◆ Body: bronze
- ◆ Ball: brass with hard chrome plate
- ◆ Stem: bronze
- ◆ O-Rings: fluorocarbon rubber
- ◆ Seats: teflon (PTFE)
- ◆ Flange: brass/cast bronze Class 150 ANSI B16.24
- ◆ Face to face: ANSI B16.10
- ◆ Prolonged life expectancy
- ◆ Working pressure: 600PSI*
- ◆ Temperature range: -50°F to 250°F (-45.5°C to 121°C)
- ◆ Open/close position indicator

OPTION

- ◆ Padlocking device



* Flanged assemblies: the pressure capacity of valve and flange assembly is restricted to the flange and not the valve.

BALL VALVE: 3-PIECE FLANGED X FLANGED (B16.24/B16.10)

DIMENSIONS

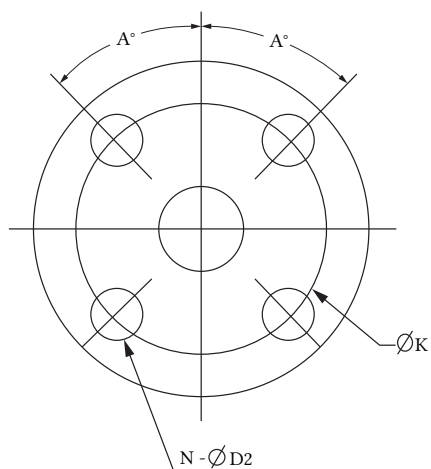
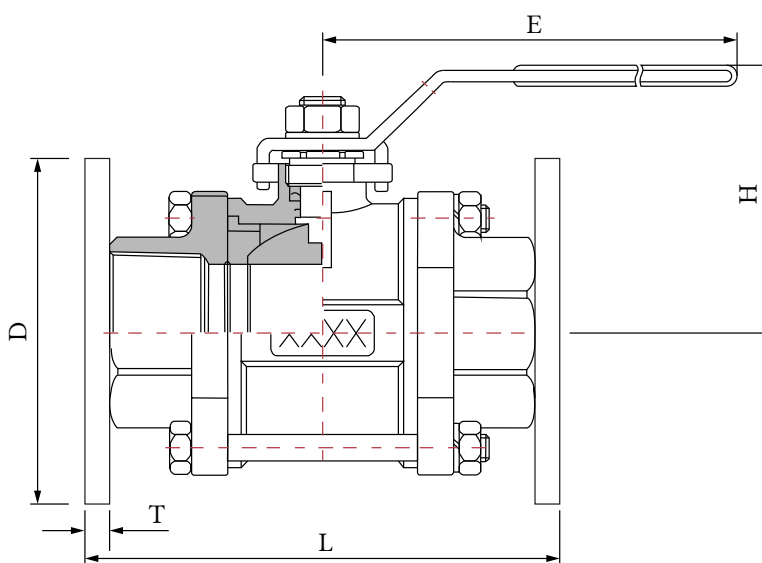
SIZE	L	D	K	H+/-5	N	D2	E+/-5	T min	A
3"	203	191	152.5	155	4	19	175	16	90

(d) -0/+10 "D"

* All dimensions recorded in millimeters

MATERIALS LIST

No	PART	MATERIAL	QTY
1	HANDLE NUT	304SS	1
2	HANDLE	GALVANIZED/304SS	1
3	PACKING GLAND	BRASS PRECISION MACHINED	1
4	PACKING	PTFE	1
5	GROUNDING WASHER	BRASS PRECISION MACHINED	1
6	BODY BOLTS	304SS	4
7	CAP	BRONZE	2
8	O-RINGS	FLUOROCARBON RUBBER	2
9	SEAT	TEFLON (PTFE)	2
10	BALL	BRASS + HARD CHROME PLATE	1
11	BODY	BRONZE	1
12	THRUST WASHER	RTFE (+15% GF)	1
13	STEM	SILICON BRONZE PRECISION MACHINED	1
14	BODY NUT	304SS	4
15	LOCKING DEVICE OPTION*	304SS	1



Holes applied evenly, symmetrically to the axis.

THERMOFLEX

Thermoflex 2136 Rue Léger, LaSalle, Québec, H8N 2L8, Canada

1-888-352-3414 514-367-1444 514-367-3193

thermoflex@bellnet.ca thermoflex.ca

B-7

DISCLAIMER: While every effort has been made to ensure the accuracy of the data herein, the data cited are subject to change without notice or liability.